



ORDER NUMBER 46438845

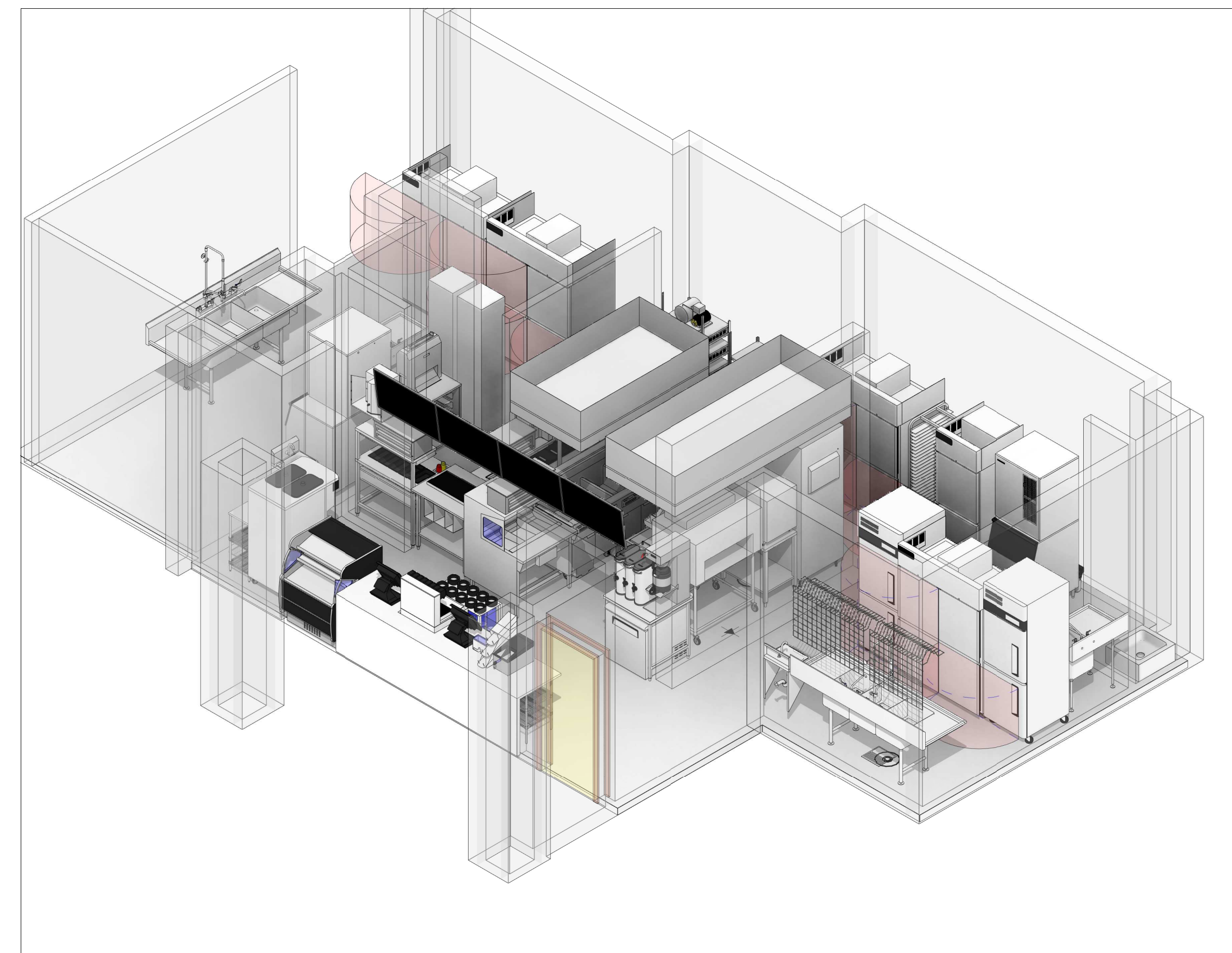
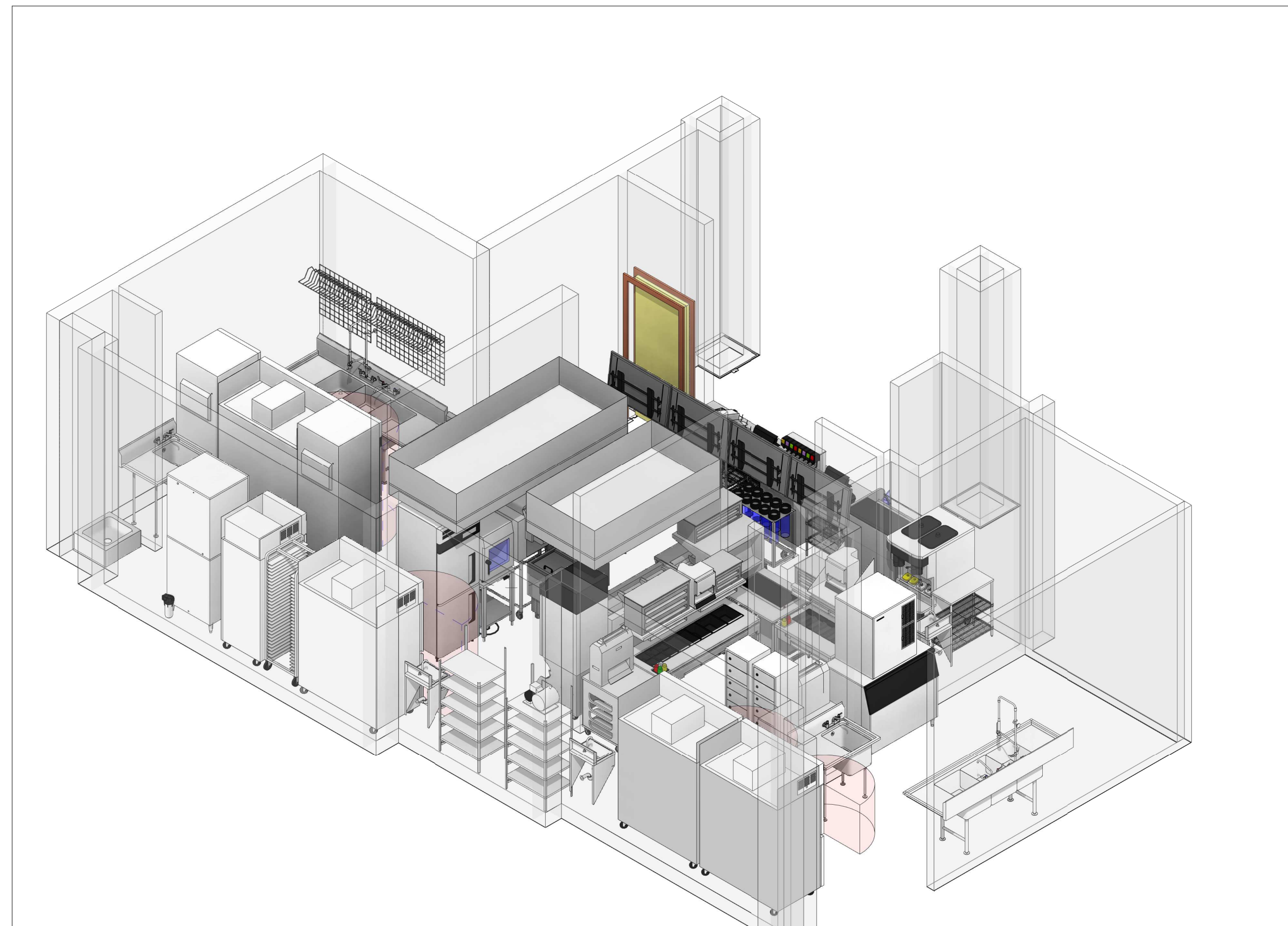
6000 N TERMINAL PKWY, CON. C

ATLANTA, GA 30320-7400

SHEET LIST

SHEET NUM.	SHEET NAME
K0.0	KES COVER SHEET
K1.0	KES EQUIPMENT PLAN
K3.0	KES ELEVATIONS
KE1.0	KES ELECTRICAL PLAN
KP1.0	KES PLUMBING PLAN

REV	DATE	DESCRIPTION
B	02/08/2023	MOVE LOCKERS, ADD ONE SINK, RELO FRONT COUNTER
A	09/22/2022	INITIAL ISSUE



Make it Wonderful



© 2020 Franke Foodservice Systems Americas, Inc.
 800 Aviation Parkway
 Smyrna, TN 37167
 Tel. +1800 472-2954
 fr-customer-service@franke.com
 www.franke-usa.com

© 2020 Franke Foodservice Systems Americas, Inc.
 These drawings and specifications are the property of Franke Technology and Trademark Ltd. and shall not be reproduced, copied or transferred to any third party without the prior written permission of Franke Technology and Trademark Ltd. (Hergau, Switzerland)
 Exclusion of Liability:
 FRANKE shall not be responsible for the accuracy of the floor plans and construction drawings. All dimensions and construction specifications FRANKE shall be checked by the client prior to installation. Specifications for power consumption and connections are limited to equipment supplied by FRANKE. All third party accessories shown are within the responsibility of the client. FRANKE reserves the right to change equipment without notice.

ACCOUNT

BURGER KING

RESTAURANT #

TITLE
KES COVER SHEET

OPERATOR
HMS HOST CORPORATION

SITE ADDRESS
**6000 N TERMINAL PKWY,
CON. C**

CITY
ATLANTA

STATE ZIP CODE
GA 30320-7400

COUNTRY REGION
USA N. AMERICA

BUILDING TYPE
AIRPORT

ELECTRICAL SERVICE
208/120V - 60HZ

GAS SERVICE
NG

MARKET MANAGER
MYLES COUYOUMJIAN

FRANKE PROJECT NUMBER
1460675

FRANKE STORE NUMBER
5212001

CREATED BY
HP033

DATE ISSUED
02/08/2023

MODIFIED BY
HP033

DRAWING SCALE
As Noted

UNITS
INCH

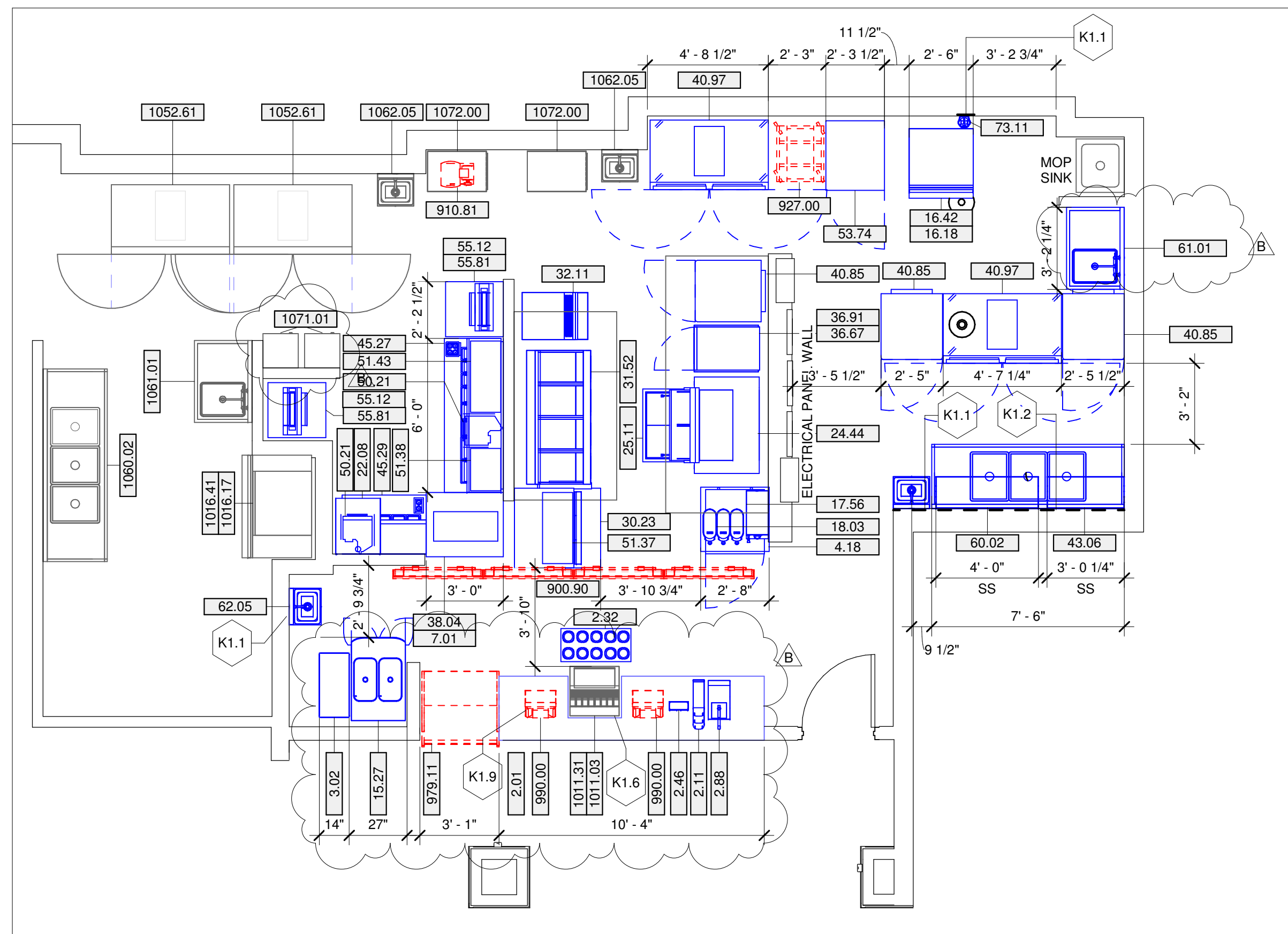
DRAWING NUMBER
ATLANTA, GA, CON. C

SHEET NAME
K0.0

REVISION
B

FRANKE CONTACT INFORMATION

MARKET MANAGER	MYLES COUYOUMJIAN
EMAIL	MYLES.COUYOUMJIAN@FRANKE.COM
PHONE	978-852-2959
PROJECT MANAGER	MARIA SORIA-ZUBIETA
EMAIL	MARIA.SORIA-ZUBIETA@FRANKE.COM
PHONE	615-462-4090



1 KES Equipment Plan
1/4" = 1'-0"

KES EQUIPMENT SCHEDULE

ITEM #	ST.	QTY.	DESCRIPTION	MANUFACTURER	MODEL #	FRANKE PART #	UL #	NSF	FURNISHED BY	REMARKS
2.01	N	6	DRY STORAGE SHELVING	SPG INTERNATIONAL	-	-	-	2	FRANKE	-
2.03	N	12	UNDERCOUNTER POST	SPG INTERNATIONAL	-	-	-	2	FRANKE	NOT SHOWN
2.11	N	1	CUP LID HOLDER	FRANKE	-	18006489	-	2	FRANKE	-
2.32	N	1	MOBILE CUP DISPENSER CART	FRANKE	-	18006842	-	2	FRANKE	F(10) CUP DISPENSERS
2.46	N	1	STRAW DISPENSER	VOLLRATH	3815-28	610896	-	2	FRANKE	-
2.81	N	1	UNDERCOUNTER BAG RACK	FRANKE	-	18001650	-	2	FRANKE	-
2.88	N	1	EXTREME COUNTERTOP DISPENSER	SERVER PRODUCTS	ECD 07500	620754	-	-	FRANKE	-
3.02	N	1	DRIVE THRU COUNTER	INTERMETRO	1430FS	624338	-	-	FRANKE	-
4.18	N	1	32" X 30" BEVERAGE STAND	FRANKE	-	18019930	-	2	FRANKE	(2) SHELVES, (4) POSTS
7.01	N	1	36" HEATING LANDING SHELF	HATCO	SDBH_3620	621737	-	4	FRANKE	-
15.27	N	1	HEAT TREAT COMBINATION SHAKE/SUNDAE MACHINE	TAYLOR	C606	618877	SA2650	6	FRANKE	WITHOUT CORD & PLUG
16.18	N	1	ICE MACHINE	HOSHIZAKI AMERICA, INC.	KM-901MAH-BK	70004236	-	2	FRANKE	-
16.42	N	1	ICE STORAGE BIN	HOSHIZAKI AMERICA, INC.	B-5055FBK	70005548K	-	2	FRANKE	-
17.56	N	1	INFUSION TEA COFFEE BREWER	BUNN-O-MATIC	52200.0108	622290-1	-	2	FRANKE	-
18.03	N	3	ICED TEA DISPENSER - SLIM	BUNN-O-MATIC	-	619935	-	-	FRANKE	-
22.08	N	1	WALL SHELF FOR MICROWAVE OVEN	FFSUS	-	18022315	-	2	FRANKE	-
24.44	N	1	BROILER BK FLAMING HEART	NIECO	FH94G BOH	626191	-	4	FRANKE	W/ STAND
25.11	N	1	34" MEAT WELL FREEZER	FRANKE	-	F501095	-	2	FRANKE	-
30.23	N	1	EXPEDITOR FORCED AIR FRY STATION- ROC	FRANKE	-	18021945	-	2	FRANKE	-
31.52	N	1	4-BANK FRYER	FRYMASTER	4FOG30U	70008717	-	4	FRANKE	-
32.11	N	1	FROZEN PRODUCT DISPENSER SINGLE	FRANKE	F3D3SP	18018396	-	2	FRANKE	-
36.67	N	1	MINI COMBI OVEN STEAMER	MANITOWOC	MS6102083LCBK1	622443	-	4	FRANKE	-
36.91	N	1	COMBI OVEN STAND	MANITOWOC	CST610MOB	622447	-	2	FRANKE	-
38.04	N	1	36"W x 30"D x 36"H WORK TABLE	FRANKE	-	18006049	-	2	FRANKE	W/ UNDERSHELF
40.85	N	3	REACH-IN FREEZER	TURBO AIR	M3F24-2-N-L	624280-1	-	7	FRANKE	-
40.97	N	2	DOUBLE REACH-IN FREEZER	DELFIELD	GBF2P-S	623876	-	2	FRANKE	-
43.06	N	1	DOUBLE SMARTWALL SHELVING	SPG INTERNATIONAL	WST162E	70006842	-	3	FRANKE	SEE DETAIL ON K1.0
45.27	N	1	72" PREP BOARD STATION	FRANKE	-	18005588	-	-	FRANKE	-
45.29	N	1	39-3/8"W PREP TABLE MODULE W/O GLASS	FRANKE	-	18005567	-	2	FRANKE	-
50.21	N	2	MICROWAVE	ACP	OC24HBK	626730	-	2	FRANKE	-
51.37	N	1	MULTI-PRODUCT HOLDING UNIT	MARMON FOODSERVICE	EHB24	625025	-	4	FRANKE	-
51.38	N	1	MULTI-PRODUCT HOLDING UNIT	MARMON FOODSERVICE	EHB22	625015	-	4	FRANKE	-
51.39	N	1	MULTI-PRODUCT HOLDING UNIT	MARMON FOODSERVICE	EHB23	625019	-	4	FRANKE	-
51.43	N	1	MULTI-PRODUCT HOLDING UNIT	MARMON FOODSERVICE	EHB34	625031-1	-	4	FRANKE	-
53.55	N	1	REACH-IN UNDERCOUNTER REFRIGERATOR - FIELD REVERSIBLE DOOR	TURBO AIR	MJR-28-N-1C	626213	-	7	FRANKE	-
53.74	N	1	REACH IN REFRIGERATOR, RH	DELFIELD	GBR1P-SH	70006570-1	-	2	FRANKE	-
55.12	N	2	DUAL CONTINUOUS FEED TOASTER	MARMON FOODSERVICE	DCFT-BKNA	622087-1	-	2	FRANKE	-
55.81	N	2	BUN RACK/BUN TOASTER CART	FRANKE	-	18013096	-	2	FRANKE	-
60.02	N	1	3 COMPARTMENT SINK	FRANKE	-	M1334	-	2	FRANKE	-
61.01	N	1	ONE COMPARTMENT SINK W/ LH DRAINBOARD	FRANKE	-	18008841	-	2	FRANKE	-
62.05	N	2	HANDS-FREE WASH STATION SINK	JOHN BOOS	617160	617160	-	-	FRANKE	-
73.11	N	1	FILTER FEEDER SCALE INHIBITOR	EVERPURE	SR-X	70004482	-	2	FRANKE	-
910.81	R	1	CARBONATOR	LANCER	85-1923-00	617544	UL403	2	OTHERS	VERIFY W/ OWNER
927.00	R	1	BUN RACK	VERIFY	VERIFY	VERIFY	-	-	OTHERS	VERIFY W/ OWNER
979.11	R	1	GRAB-N-GO REFRIGERATED DISPLAY CASE	FEDERAL INDUSTRIES	LFRSS3	793909	-	7	OTHERS	VERIFY W/ OWNER
990.00	R	2	P.O.S. SYSTEM	VERIFY	VERIFY	VERIFY	-	-	OTHERS	VERIFY W/ OWNER
1011.03	E	1	ICE/SODA DISPENSER	EXISTING	-	-	-	-	EXISTING	EXISTING EQUIPMENT TO REMAIN
1011.31	E	1	ICE/SODA DISPENSER STAND	EXISTING	-	-	-	-	EXISTING	EXISTING EQUIPMENT TO REMAIN
1016.17	E	1	ICE MACHINE	EXISTING	-	-	-	-	EXISTING	EXISTING EQUIPMENT TO REMAIN
1016.41	E	1	ICE STORAGE BIN	EXISTING	-	-	-	-	EXISTING	EXISTING EQUIPMENT TO REMAIN
1023.00	E	1	BROILER HOOD	EXISTING	-	-	-	-	EXISTING	EXISTING EQUIPMENT TO REMAIN
1033.00	E	1	FRYER HOOD	EXISTING	-	-	-	-	EXISTING	EXISTING EQUIPMENT TO REMAIN
1052.61	E	2	DOUBLE REACH-IN REFRIGERATOR	EXISTING	-	-	-	-	EXISTING	EXISTING EQUIPMENT TO REMAIN
1060.02	E	1	3 COMPARTMENT SINK	EXISTING	-	-	-	-	EXISTING	EXISTING EQUIPMENT TO REMAIN
1061.01	E	1	ONE COMPARTMENT SINK W/ LH DRAINBOARD	EXISTING	-	-	-	-	EXISTING	EXISTING EQUIPMENT TO REMAIN
1062.05	E	2	HANDS-FREE WASH STATION SINK	EXISTING	-	-	-	-	EXISTING	EXISTING EQUIPMENT TO REMAIN
1071.01	E	2	LOCKER	EXISTING	-	-	-	-	EXISTING	EXISTING EQUIPMENT TO REMAIN
1072.00	E	2	BAG-N-BOX SYRUP RACK	EXISTING	-	-	-	-	EXISTING	EXISTING EQUIPMENT TO REMAIN

EQUIPMENT KEYNOTES

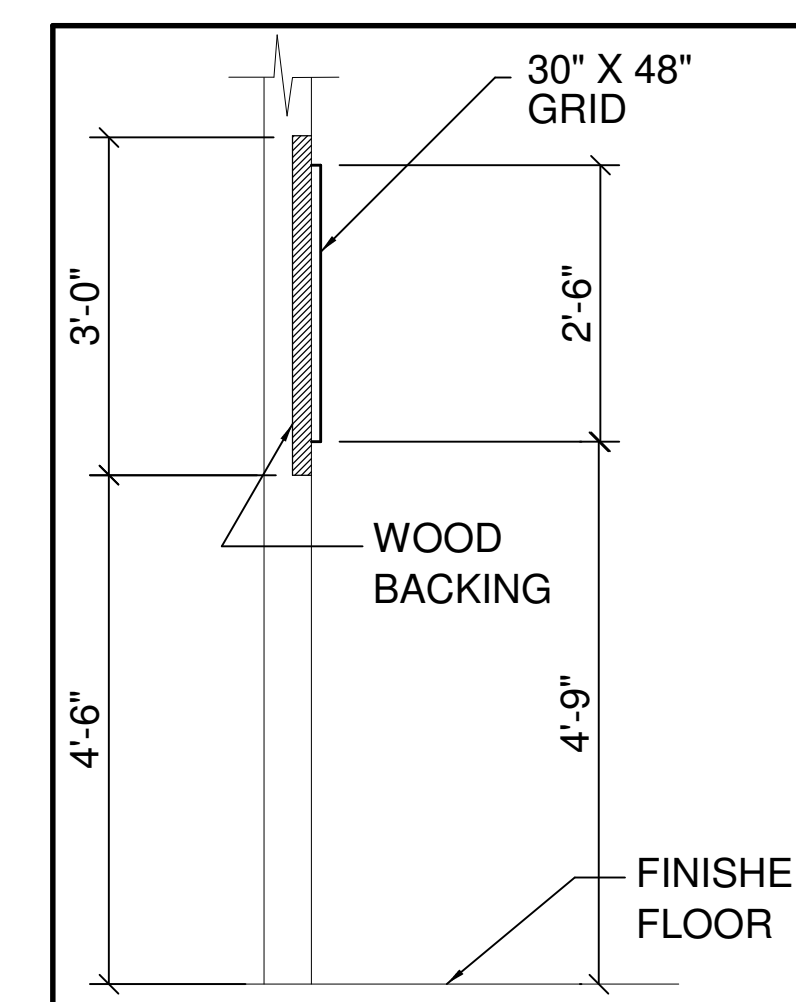
KEY VALUE	KEYNOTE TEXT
K1.1	WALL BACKING BY G.C. SEE DETAILS ON SHEET K4-G.C. TO EXTEND BACKING BEYOND END OF EQUIPMENT, EACH SIDE.
K1.2	G.C. TO MAKE CUT IN FRONT COUNTER.
K1.6	ALL P.O.S SYSTEM SUPPLIED & INSTALLED BY OWNER.
K1.9	

DRAWING NOTES

- THIS DRAWING REFLECTS THE EQUIPMENT ORDERED AS OF THE DATE SHOWN. ADDITIONS OR DELETIONS MAY BE MADE TO THE ORDER, AND THESE CHANGES MAY NOT BE REFLECTED IN THIS DRAWING. PLEASE CONTACT FRANKE, INC. TO ADDRESS ANY QUESTIONS OR TO CONFIRM YOUR ORDER.
- ANY DEVIATIONS FROM THESE PLANS, FOR ANY REASON, SHALL NOT BE DONE WITHOUT PRIOR WRITTEN NOTIFICATION TO FRANKE FOODSERVICE SYSTEMS, INC. FRANKE FOODSERVICE SYSTEMS, INC. SHALL NOT BE HELD RESPONSIBLE FOR DEVIATIONS, CHANGES, ADDITIONS OR DELETIONS NOT REVIEWED AND APPROVED IN ADVANCE BY A FRANKE REPRESENTATIVE.
- FRANKE FOODSERVICE SYSTEMS HAS PREPARED THESE PLANS AS ACCURATELY AS POSSIBLE WITH THE ARCHITECTURAL INFORMATION PROVIDED. FRANKE CANNOT BE HELD RESPONSIBLE FOR ADDITIONAL CONSTRUCTION COSTS DUE TO INACCURATE OR INCOMPLETE ARCHITECTURAL INFORMATION. ANY COSTS INCURRED DUE TO ADJUSTMENTS TO THESE PLANS BASED ON-SITE CONDITIONS, SHALL BE AT THE OWNER'S EXPENSE.
- FOR ANY KITCHEN AREAS NOT SHOWING EQUIPMENT, NO WORK IS TO BE PERFORMED IN THAT AREA UNLESS SPECIFICALLY INSTRUCTED OTHERWISE ON THESE DRAWINGS OR BY A FRANKE REPRESENTATIVE IN A WRITTEN COMMUNICATION.

GENERAL CONTRACTOR NOTES

- GC1 PRIOR TO CONSTRUCTION START, IT IS RECOMMENDED THAT THE GENERAL CONTRACTOR VERIFY ALL BUILDING DIMENSIONS, EQUIPMENT PLACEMENT, FURNITURE PLACEMENT, & UTILITY LOCATIONS. PLEASE NOTIFY A FRANKE REPRESENTATIVE IN WRITING IF ADJUSTMENTS TO THE DRAWINGS ARE REQUIRED.
- GC2 ALL WORK SHALL BE PERFORMED BY A QUALIFIED LICENSED CONTRACTOR IN ACCORDANCE WITH ALL COUNTRY, STATE, & LOCAL CODES.
- GC3 ALL WORK SHALL BE COMPLETED IN A NEAT, PROFESSIONAL, & SAFE WORKMAN-LIKE MANNER.
- GC4 NOTIFY FRANKE IMMEDIATELY IF COMPLIANCE WITH ANY CODES IS IN CONFLICT WITH THESE DRAWINGS.
- GC5 NOTIFY FRANKE IMMEDIATELY IF THESE DRAWINGS DIFFER FROM THE ARCHITECTURAL OR MEP DRAWINGS.
- GC6 THESE DRAWINGS ONLY INCLUDE THE REQUIREMENTS FOR THE ITEMS PROVIDED BY FRANKE. G.C. TO VERIFY THE REQUIREMENTS FOR ITEMS NOT PROVIDED BY FRANKE. REFER TO ARCHITECTURAL, STRUCTURAL, OR MEP DRAWING FOR OTHER REQUIREMENTS.
- GC7 G.C. SHALL PROVIDE & INSTALL PLYWOOD WALL BACKING FOR EQUIPMENT WHERE IT IS REQUIRED.
- GC8 G.C. TO DETERMINE THE LOCATION OF & SET REMOTE CONDENSERS ON ROOF.
- GC9 G.C. TO PROVIDE & INSTALL EQUIPMENT STAND & PITCH PANS FOR ROOF MOUNTED CONDENSING UNITS.
- GC10 G.C. SHALL PROVIDE ACCESS FOR THE EQUIPMENT TRUCK TO WITHIN 10' (3m) OF THE BUILDING DOORS PRIOR TO THE ARRIVAL OF THE EQUIPMENT TRUCK AT THE RESTAURANT.
- GC11 BY OWNER EQUIPMENT WILL BE LISTED IN THE MAIN EQUIPMENT SCHEDULE.



2 WOOD BACKING DETAIL 'B'
NOT TO SCALE

- EXISTING EQUIPMENT
- DEMOLISHED EQUIPMENT
- RELOCATED EQUIPMENT
- NEW EQUIPMENT
- FUTURE EQUIPMENT

HP003
HP003
BY

02/08/2023
09/22/2022

B
A

REV
DATE

DESCRIPTION

MOVE LOCKERS, ADD ONE SINK, RELO FRONT COUNTER

Make it Wonderful

FRANKE

Franske Foodservice Systems Americas, Inc.
800 Aviation Parkway
Smarrs, TN 37167
Tel. +1 800 472-2954
frs-customer-service@franke.com
www.franksupply.com

© 2020 Franke Foodservice Systems Americas, Inc.
These drawings and specifications are the property of Franke Technology and Trademarks Ltd. and shall not be reproduced, copied or transferred to any third party without the prior written permission of Franke Technology and Trademarks Ltd. (Hertford, Hertfordshire)

Exclusion of Liability:
FRANKE shall not be responsible for the accuracy of the floor plans and construction drawings. All dimensions are approximate and shall be verified by the contractor. Specifications for power consumption and utility requirements are limited to equipment supplied by FRANKE. All third party accessories shown are the property of the client. FRANKE reserves the right to change equipment without notice.

ACCOUNT
BURGER KING

RESTAURANT #
-

TITLE
KES EQUIPMENT PLAN

OPERATOR
HMS HOST CORPORATION

SITE ADDRESS
**6000 N TERMINAL PKWY,
CON. C
ATLANTA
GA
30320-7400**

COUNTRY
USA

REGION
N. AMERICA

BUILDING TYPE
AIRPORT

ELECTRICAL SERVICE
208/120V - 60HZ

GAS SERVICE
NG

MARKET MANAGER
MYLES COUYOUMJIAN

FRANKE PROJECT NUMBER
1460675

FRANKE STORE NUMBER
5212001

CREATED BY
Designer

DATE ISSUED
02/08/2023

MODIFIED BY
HP033

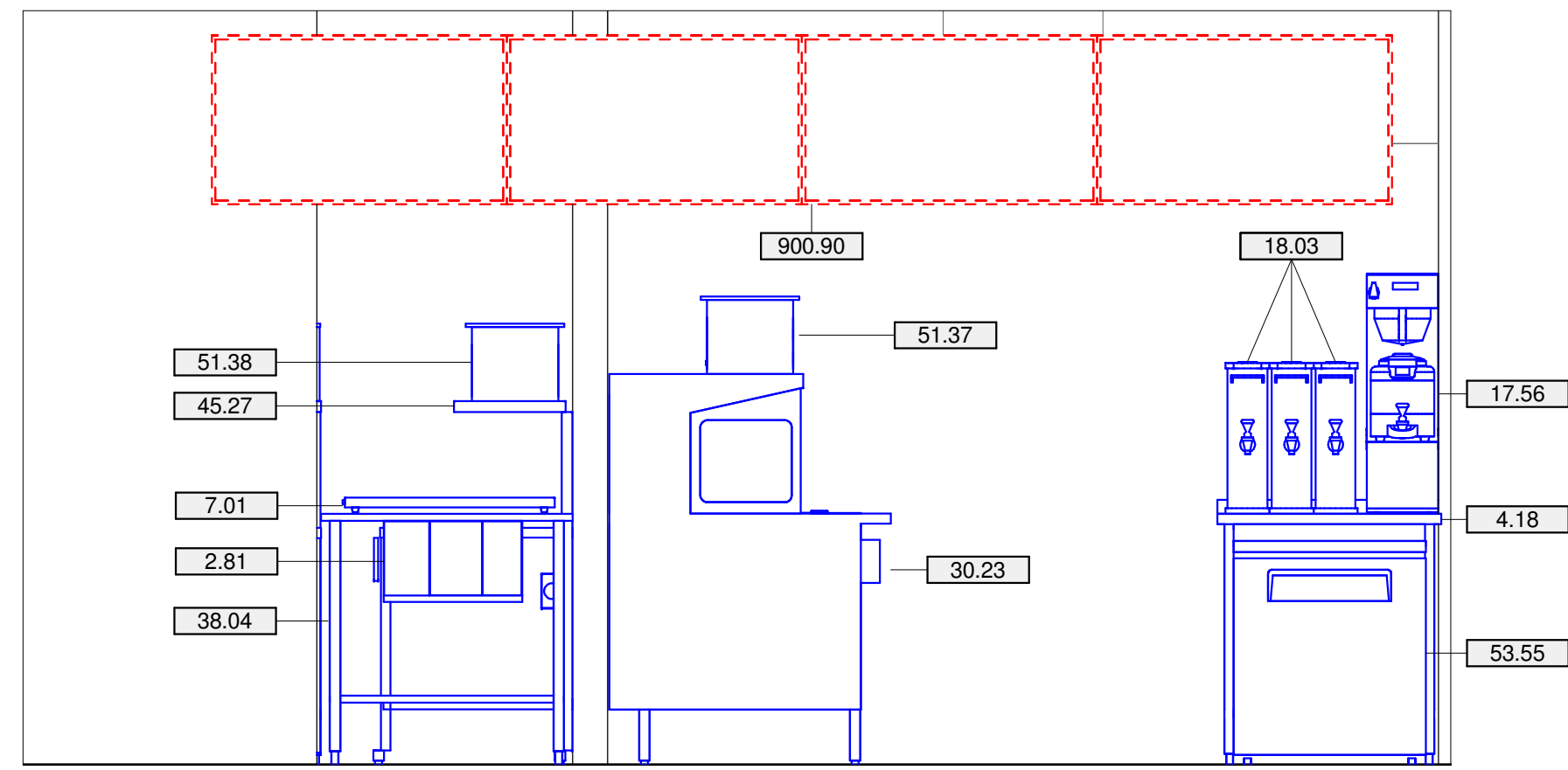
DRAWING SCALE
As Noted

UNITS
INCH

DRAWING NUMBER
ATLANTA, GA, CON. C

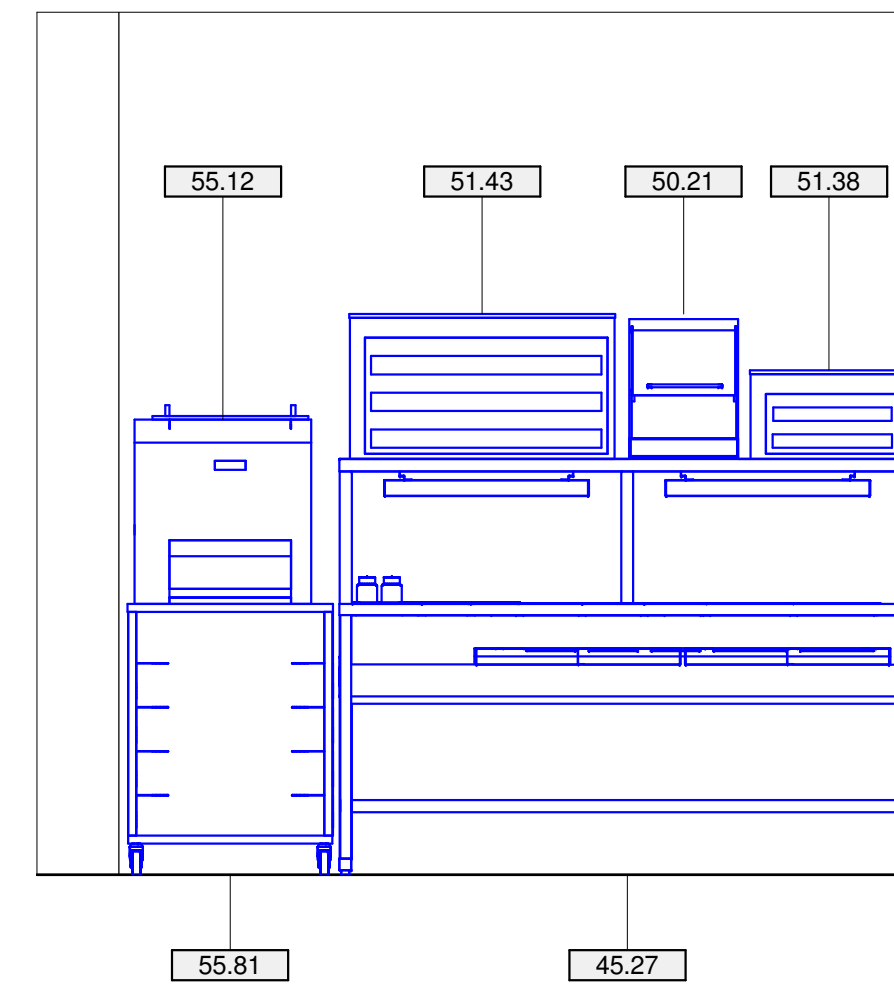
SHEET NAME
K1.0

REVISION
B



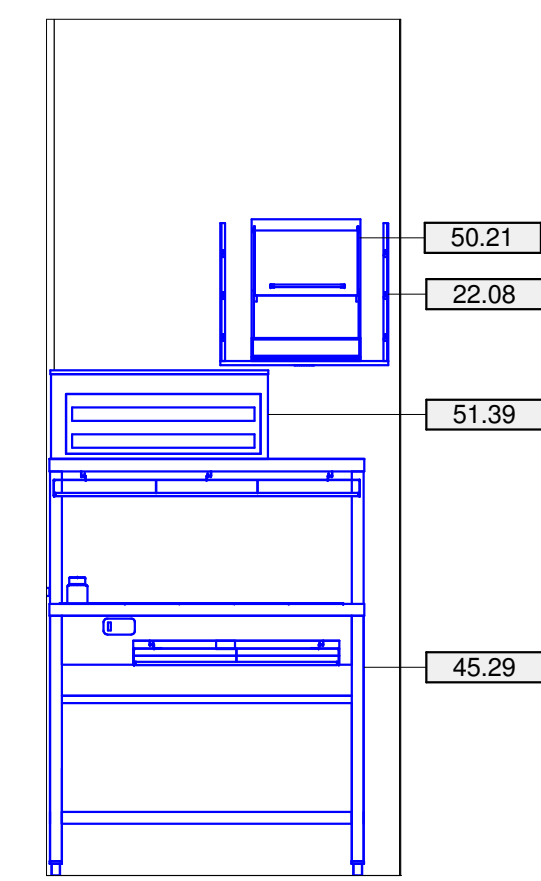
1 EXPEDITOR ELEVATION

1/2" = 1'-0"



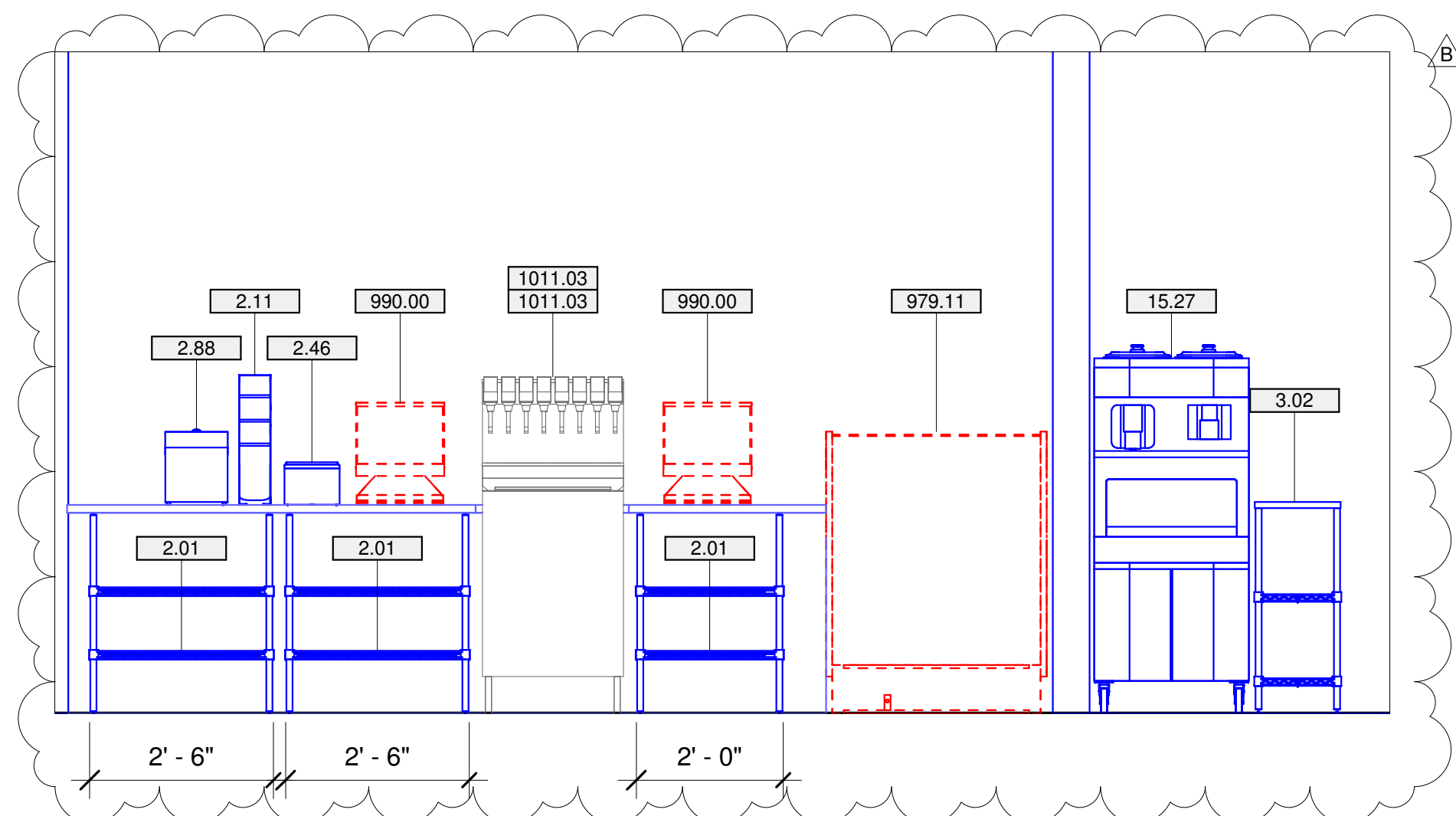
2 PREP TABLE 1 ELEVATION

1/2" = 1'-0"



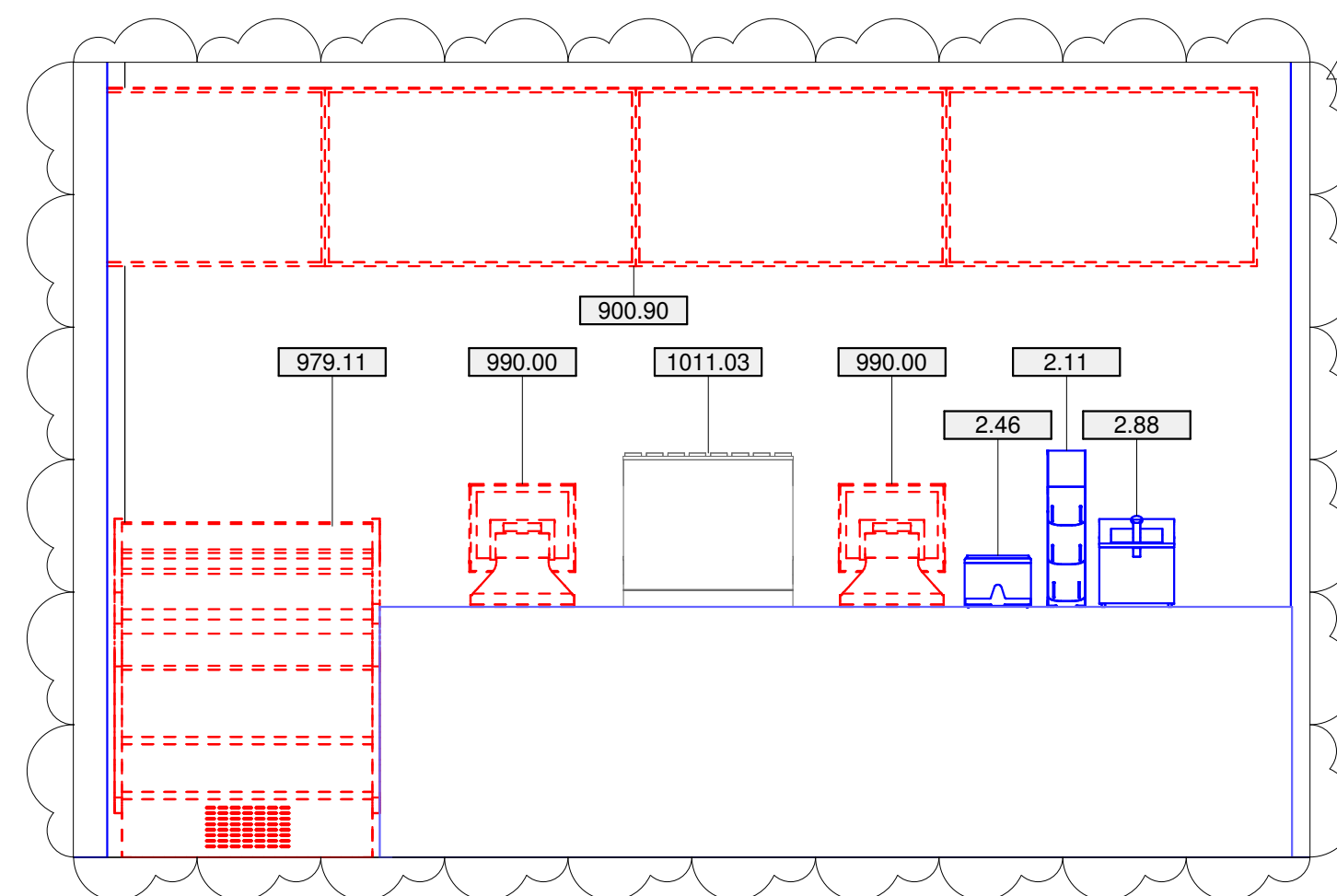
3 PREP TABLE 2 ELEVATION

1/2" = 1'-0"



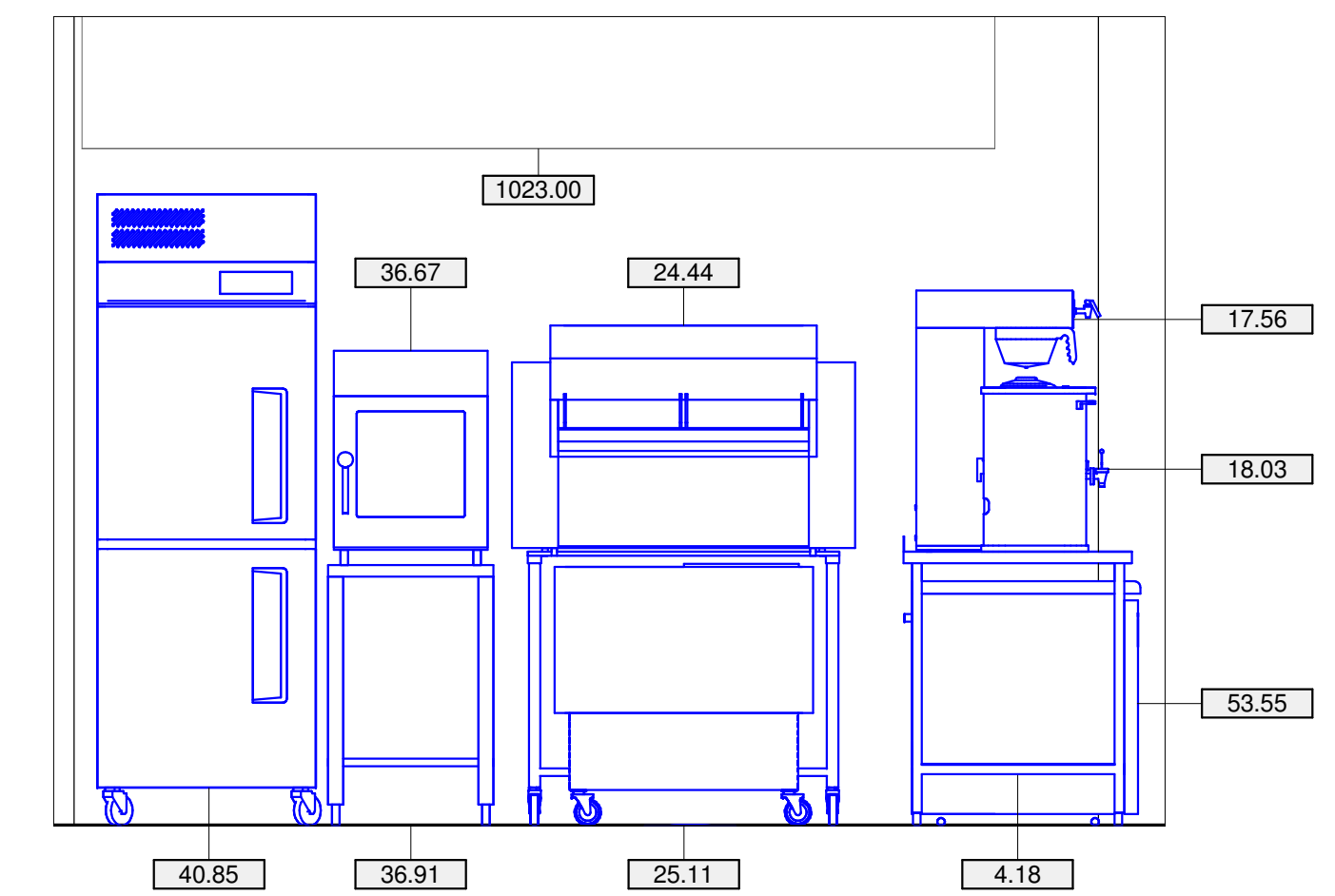
4 SERVICE COUNTER ELEVATION - CREW VIEW

1/2" = 1'-0"



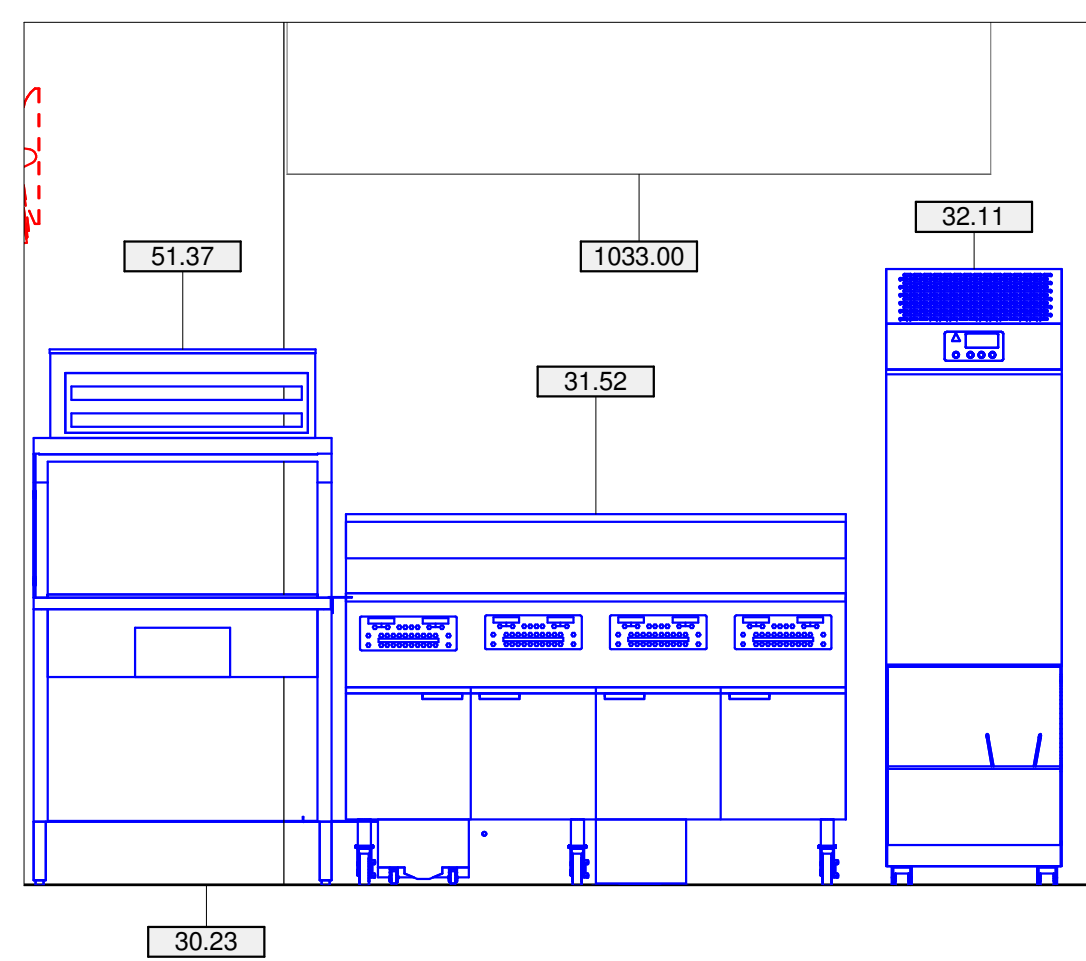
5 SERVICE COUNTER ELEVATION - CUSTOMER VIEW

1/2" = 1'-0"



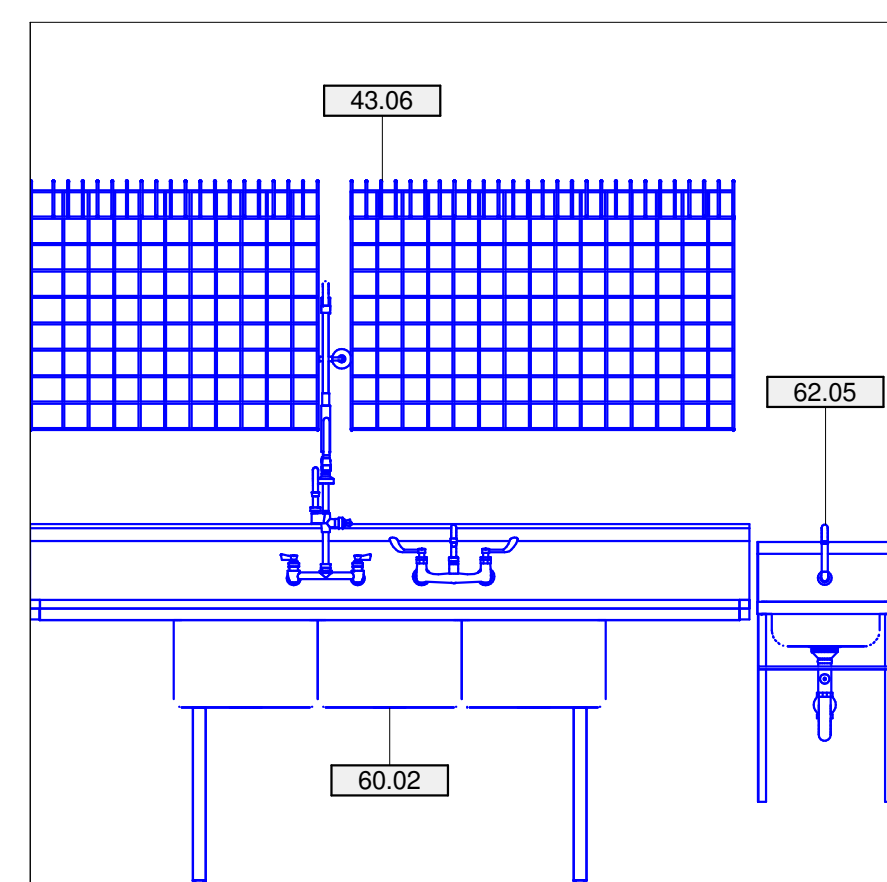
6 BROILER HOOD STATION ELEVATION

1/2" = 1'-0"



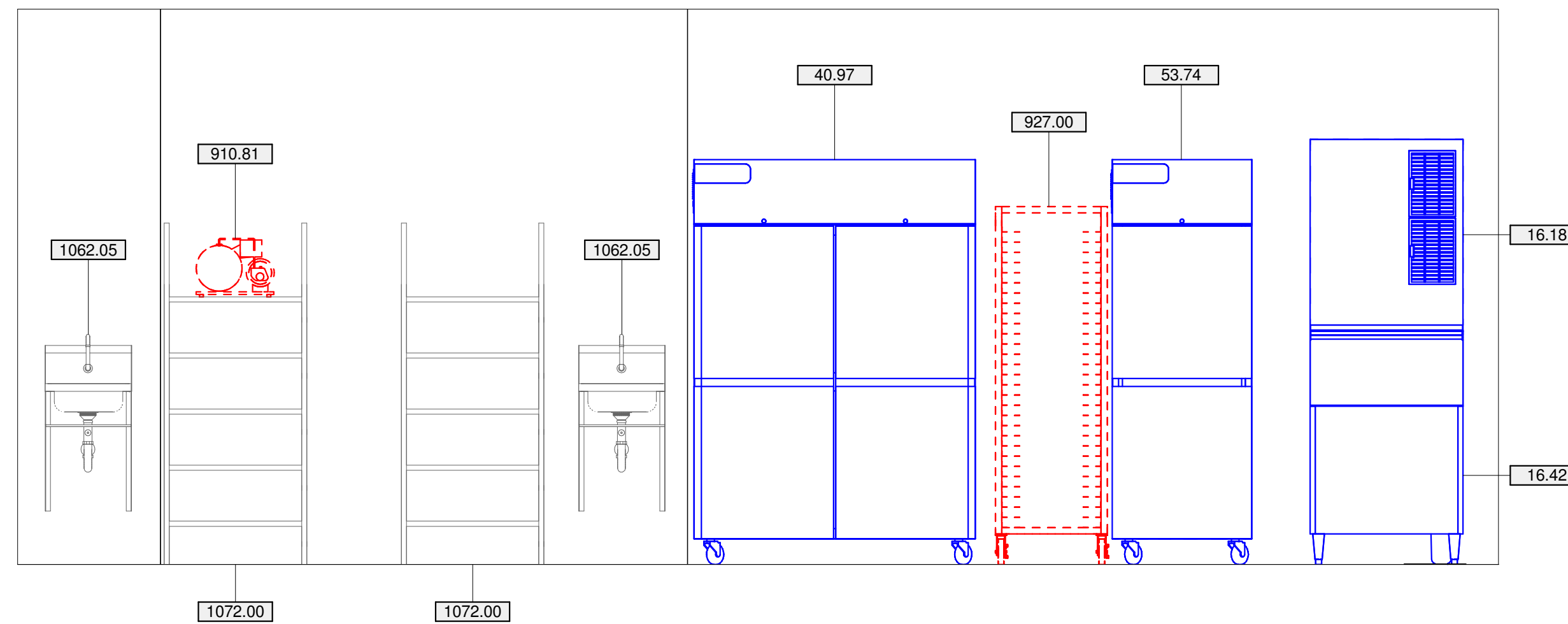
7 FRYER HOOD STATION ELEVATION

1/2" = 1'-0"



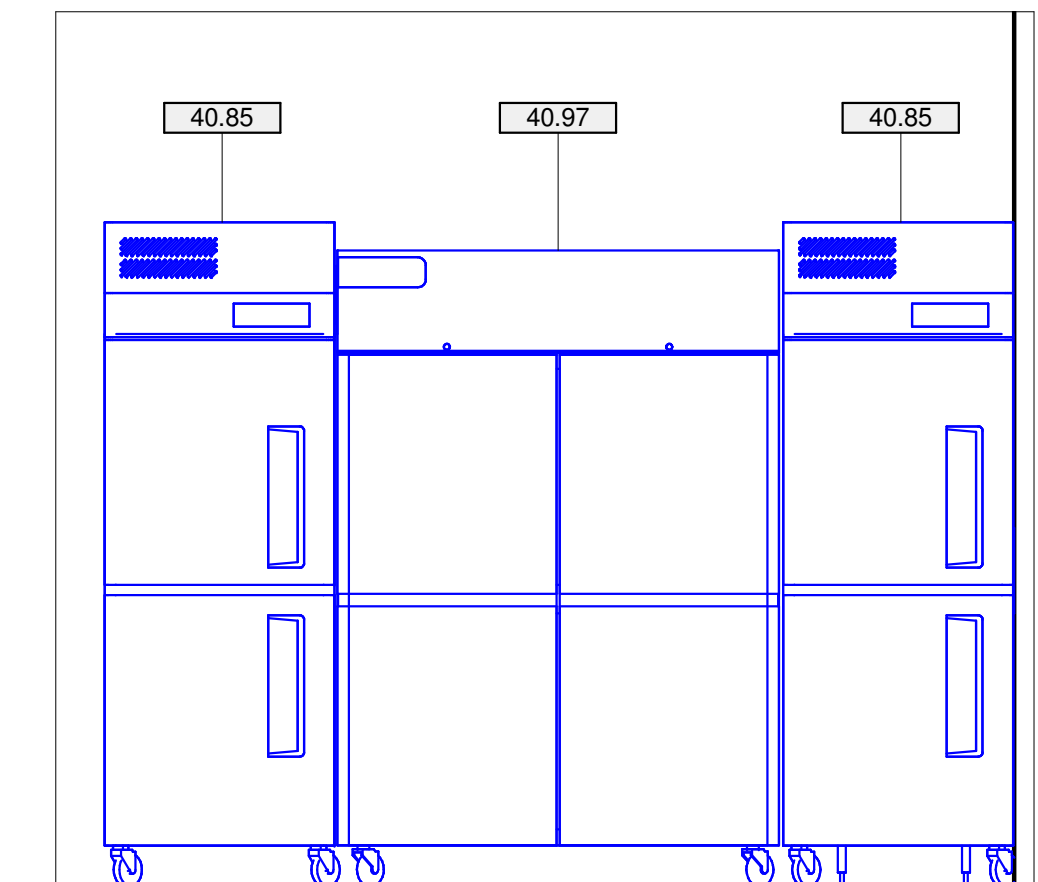
8 SINK/BACK ROOM ELEVATION

1/2" = 1'-0"



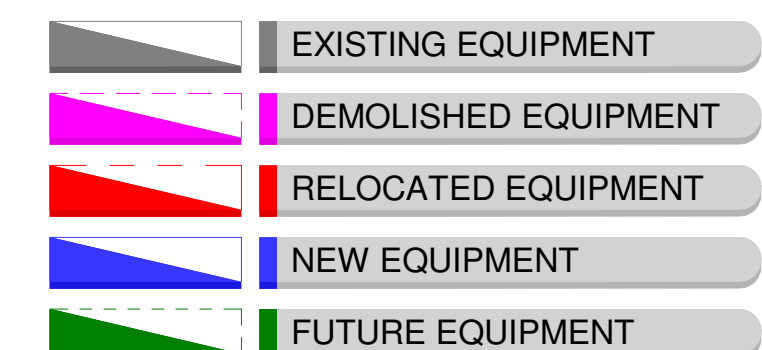
9 ICE MACHINE WALL ELEVATION

1/2" = 1'-0"



10 BACK AREA ELEVATION

1/2" = 1'-0"



REV	DATE	DESCRIPTION	BY
B	02/08/2023	MOVE LOCKERS, ADD ONE SINK, RELO FRONT COUNTER	HP033
A	09/22/2022	INITIAL ISSUE	HP033



© 2020 Franke Foodservice Americas, Inc.
 Franke Foodservice Systems Americas, Inc.
 800 Aviation Parkway
 Smyrna, TN 37167
 Tel. +1800 472-2954
 fr_customer-service@franke.com
 www.franke-usa.com

Exclusion of Liability:
 FRANKE shall not be responsible for the accuracy of the floor plans and construction drawings. All dimensions and construction specifications for FRANKE shall be obtained by the client prior to installation. Specifications for power consumption and connections are limited to equipment supplied by FRANKE. All third party accessories shown are within the responsibility of the client. FRANKE reserves the right to change equipment without notice.

ACCOUNT
BURGER KING
 RESTAURANT #
 -
 TITLE
KES ELEVATIONS

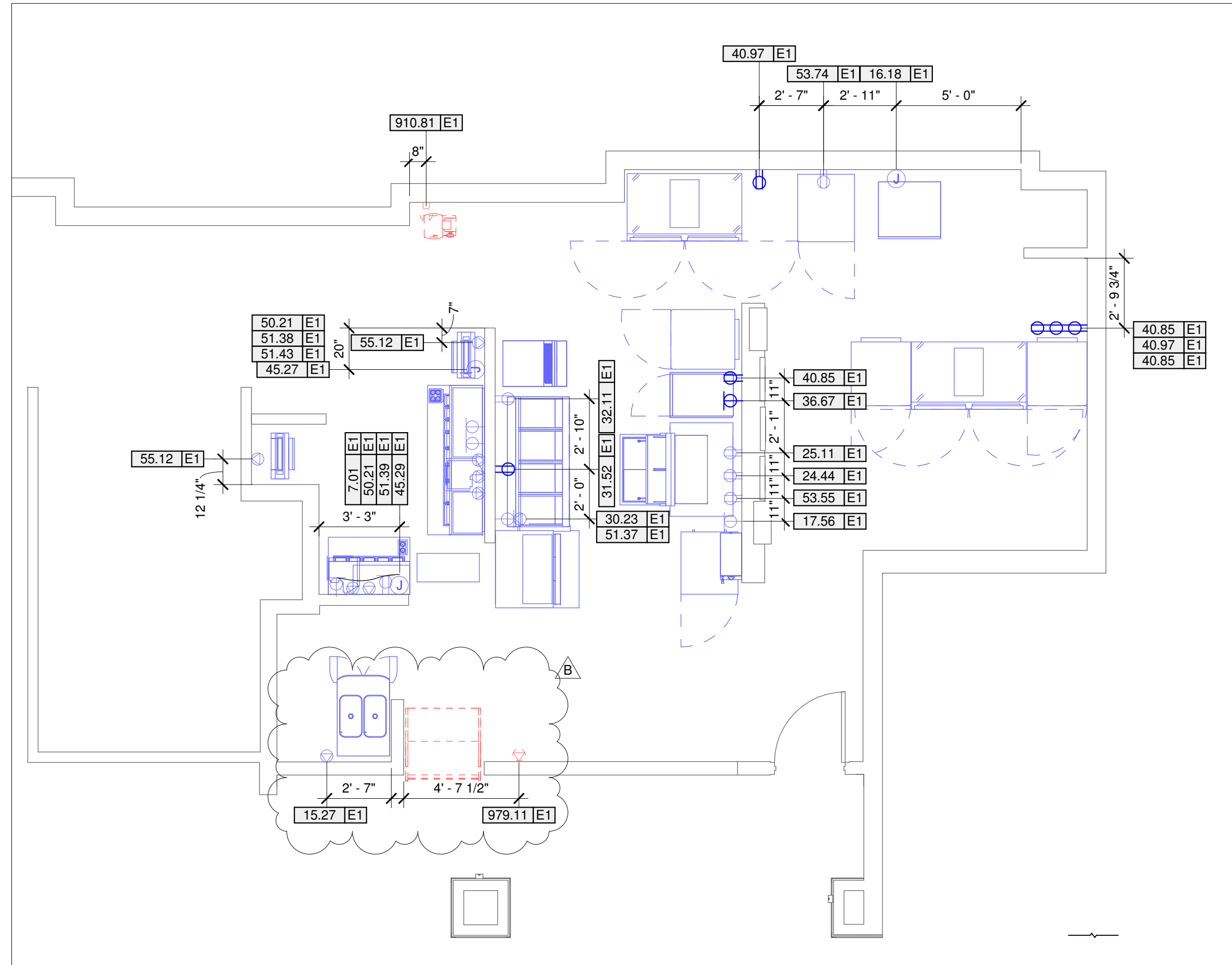
OPERATOR
HMS HOST CORPORATION
 SITE ADDRESS
**6000 N TERMINAL PKWY,
 CON. C**
 CITY
ATLANTA
 STATE ZIP CODE
GA 30320-7400
 COUNTRY REGION
USA N. AMERICA

BUILDING TYPE
AIRPORT
 ELECTRICAL SERVICE
208/120V - 60HZ
 GAS SERVICE
NG
 MARKET MANAGER
MYLES COUYOUMJIAN
 FRANKE PROJECT NUMBER
1460675
 FRANKE STORE NUMBER
5212001

CREATED BY
 Designer
 DATE ISSUED
02/08/2023
 MODIFIED BY
 HP033
 DRAWING SCALE
As Noted
 UNITS
INCH
 DRAWING NUMBER
ATLANTA, GA, CON. C
 SHEET NAME
K3.0
 REVISION
B

KES ELECTRICAL SCHEDULE

ITEM #	TAG #	QTY	DESCRIPTION	VOLTS	PH	CYCLE	HP	BRKR SIZE	AMPS	ELEC CONN TYPE	PLUG TYPE	CONN RI HIGHT	ELECTRICAL REMARKS
7.01	E1	1	36" HEATING LANDING SHELF	120 V	1	60 Hz	-	20.00 A	6.50 A	PLUG & CORD	NEMA 5-15P	0"	CONNECTS INTO RECEPTACLE ON PREP TABLE
15.27	E1	1	HEAT TREAT COMBINATION SHAKE/SUNDAE MACHINE	208 V	3	60 Hz	2 1/2	45.00 A	35.00 A	PLUG & CORD	SEE RMKS	36"	E.C. TO SUPPLY & INSTALL 6FT. CORD & PLUG.
16.18	E1	1	ICE MACHINE	208 V	1	60 Hz	-	20.00 A	11.40 A	DIRECT WIRED	DIRECT WIRED	48"	-
17.56	E1	1	INFUSION TEA COFFEE BREWER	120 V	1	60 Hz	-	20.00 A	14.00 A	PLUG & CORD	NEMA 5-15P	24"	-
24.44	E1	1	BROILER BK FLAMING HEART	120 V	1	60 Hz	-	20.00 A	3.50 A	PLUG & CORD	NEMA 5-20P	24"	-
25.11	E1	1	34" MEAT WELL FREEZER	120 V	1	60 Hz	-	20.00 A	7.60 A	PLUG & CORD	NEMA 5-15P	24"	-
30.23	E1	1	EXPEDITOR FORCED AIR FRY STATION- ROC	208 V	1	60 Hz	-	20.00 A	16.00 A	PLUG & CORD	NEMA 5-15P	24"	-
31.52	E1	1	4 BANK FRYER	120 V	1	60 Hz	-	20.00 A	10.00 A	PLUG & CORD	NEMA 5-15P	24"	-
32.11	E1	1	FROZEN PRODUCT DISPENSER SINGLE	120 V	1	60 Hz	-	15.00 A	5.50 A	PLUG & CORD	NEMA 5-15P	24"	10' POWER CORD
36.67	E1	1	MINI COMBI OVEN-STEAMER	208 V	3	60 Hz	-	20.00 A	17.90 A	PLUG & CORD	NEMA 15-30P	24"	E.C. TO SUPPLY & INSTALL CORD & PLUG
40.85	E1	3	REACH-IN FREEZER	120 V	1	60 Hz	1/2	20.00 A	7.80 A	PLUG & CORD	NEMA 5-20P	24"	-
40.97	E1	2	DOUBLE REACH-IN FREEZER	115 V	1	60 Hz	3/4	0.00 A	10.00 A	DIRECT WIRED	NEMA 5-15P	24"	-
45.27	E1	1	72" PREP BOARD STATION	120 V	1	60 Hz	-	20.00 A	1.25 A	PLUG & CORD	NEMA 5-20P	18"	E.C. TO RUN CIRCUIT THRU CHASE PANEL, SUPPLY & INSTALL RECEPTACLE TO J-BOX ON CHASE
45.29	E1	1	39-38"W PREP TABLE MODULE W/O GLASS	120 V	1	60 Hz	-	20.00 A	0.30 A	PLUG & CORD	NEMA 5-20P	24"	E.C. TO RUN CIRCUIT THRU CHASE PANEL, SUPPLY & INSTALL RECEPTACLE TO J-BOX ON CHASE AND CONNECT AS REQ'D.
50.21	E1	2	MICROWAVE	230 V	1	60 Hz	-	20.00 A	20.00 A	DIRECT WIRED	NEMA 6-20P	0"	CONNECTS INTO RECEPTACLE ON PREP TABLE
51.37	E1	1	MULTI-PRODUCT HOLDING UNIT	208 V	1	60 Hz	-	20.00 A	9.00 A	PLUG & CORD	NEMA 6-15P	60"	-
51.38	E1	1	MULTI-PRODUCT HOLDING UNIT	208 V	1	60 Hz	-	20.00 A	4.30 A	PLUG & CORD	NEMA 6-20P	0"	CONNECTS INTO RECEPTACLE ON PREP TABLE
51.39	E1	1	MULTI-PRODUCT HOLDING UNIT	208 V	1	60 Hz	-	20.00 A	6.80 A	PLUG & CORD	NEMA 6-15P	0"	CONNECTS INTO RECEPTACLE ON PREP TABLE
51.43	E1	1	MULTI-PRODUCT HOLDING UNIT	208 V	1	60 Hz	-	20.00 A	13.50 A	PLUG & CORD	NEMA 6-15P	0"	CONNECTS INTO RECEPTACLE ON PREP TABLE
53.55	E1	1	REACH-IN UNDERCOUNTER REFRIGERATOR - FIELD REVERSIBLE DOOR	115 V	1	60 Hz	1/5	20.00 A	3.30 A	PLUG & CORD	NEMA 5-15P	24"	-
53.74	E1	1	REACH IN REFRIGERATOR, RH	115 V	1	60 Hz	1/4	10.00 A	4.20 A	PLUG & CORD	NEMA 5-15P	24"	-
55.12	E1	2	DUAL CONTINUOUS FEED TOASTER	208 V	1	60 Hz	-	20.00 A	15.00 A	PLUG & CORD	NEMA L6-30P	24"	VERIFY AND REWORK ALL EXISTING UTILITIES AS REQUIRED
910.61	E1	1	CARBONATOR	120 V	1	60 Hz	1/3	20.00 A	6.20 A	PLUG & CORD	NEMA 5-20P	78"	VERIFY AND REWORK ALL EXISTING UTILITIES AS REQUIRED
979.11	E1	1	GRAB-N-GO REFRIGERATED DISPLAY CASE	120 V	1	60 Hz	1/3	20.00 A	16.00 A	PLUG & CORD	NEMA 5-20P	18"	VERIFY AND REWORK ALL EXISTING UTILITIES AS REQUIRED
1011.03	E1	1	ICE/SODA DISPENSER	0 V	0	60 Hz	-	0.00 A	0.00 A	-	-	0"	EXISTING EQUIPMENT TO REMAIN AS-IS
1016.17	E1	1	ICE MACHINE	0 V	0	60 Hz	-	0.00 A	0.00 A	-	-	0"	EXISTING EQUIPMENT TO REMAIN AS-IS
1052.61	E1	2	DOUBLE REACH-IN REFRIGERATOR	0 V	0	60 Hz	-	0.00 A	0.00 A	-	-	0"	EXISTING EQUIPMENT TO REMAIN AS-IS



ELECTRICAL CONTRACTOR NOTES

- E.C. TO PROVIDE AND INSTALL RECEPTABLES, CAPS, AND CORDS AS REQUIRED. CAPS AND CORDS ARE TO BE INSTALLED ACCORDING TO THE MANUFACTURER'S INSTRUCTIONS AND COMPLY WITH ALL APPLICABLE CODES
- E.C. TO CONNECT ELECTRICAL SERVICE DIRECTLY TO EQUIPMENT ACCORDING TO THE MANUFACTURER'S INSTRUCTIONS. ELECTRICAL CONNECTIONS SHALL COMPLY WITH ALL APPLICABLE CODES
- E.C. TO RE-CONNECT ELECTRICAL CIRCUITS ON ALL PRE-WIRED EQUIPMENT DISASSEMBLED FOR SHIPMENT.
- WHERE EQUIPMENT IS NOT PRE-WIRED, E.C. TO CONNECT THE ELECTRICAL SERVICE AND PROVIDE INTER-WIRING AS REQUIRED.
- WHERE RECEPTABLES PROVIDED WITH THE EQUIPMENT, E.C. TO EXTEND ELECTRICAL SERVICE AS REQUIRED TO PROVIDED RECEPTABLES
- FRANKE KITCHEN DRAWINGS ONLY INCLUDE RECEPTABLES REQUIRED FOR SPECIFIC KITCHEN EQUIPMENT. REFER TO BUILDING FLOOR PLANS FOR THE LOCATIONS OF UTILITY AND GENERAL PURPOSE RECEPTABLES.
- E.C. TO VERIFY UTILITY REQUIREMENTS FOR ITEMS NOT PROVIDED BY FRANKE.
- NOTIFY FRANKE PROJECT MANAGER IMMEDIATELY IN WRITING IF THESE DRAWINGS ARE IN CONFLICT WITH ANY LOCAL, STATE OR NATIONAL CODES.

WALK-IN COOLER/FREEZER NOTES

- E.C. TO PROVIDE AND INSTALL A HEATING ELEMENT ON THE COOLER AND FREEZER CONDENSATE DRAIN LINE.
- E.C. TO CONNECT THE PRIMARY ELECTRICAL SERVICE TO THE CONDENSING UNITS, AND INTER-WIRE SERVICE TO THE EVAPORATOR COIL(S), CONTROLS, LIGHT FIXTURES AND DOOR PERIMETER HEATERS.

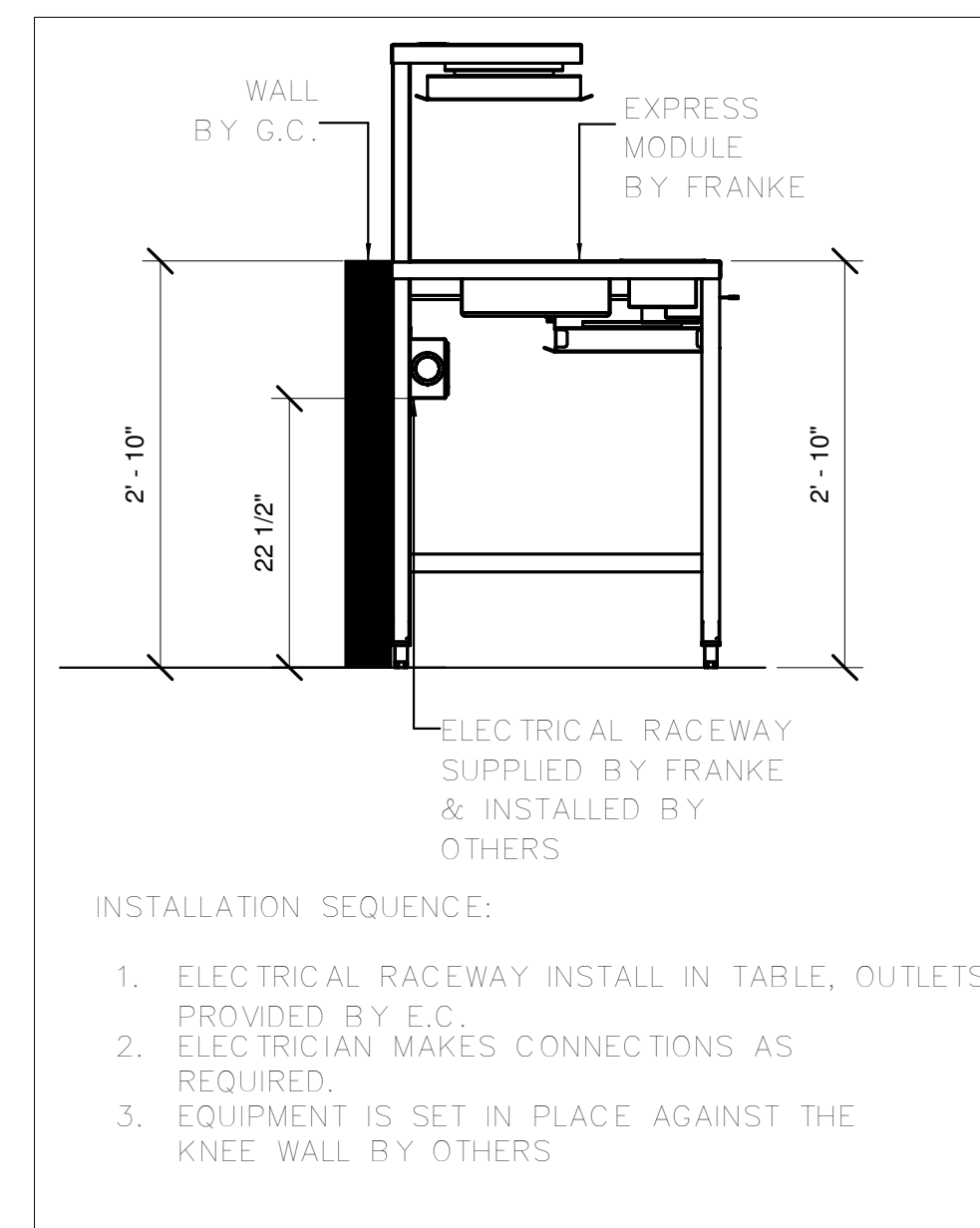
ABBREVIATIONS

AFC	ABOVE FINISHED CEILING
AFF	ABOVE FINISHED FLOOR
AFR	ABOVE FINISHED ROOF
BFC	BELOW FINISHED CEILING
WIB	WALK-IN BOX (COOLER/FREEZER)

SYMBOL LEGEND

	SINGLE RECEPTACLE	XXX.XX	EQUIPMENT TAG
	DUPLEX RECEPTACLE	XXX.XX E1	ELECTRICAL ROUGH-IN TAG
	SPECIAL RECEPTACLE	XXX.XX P1	PLUMBING ROUGH-IN TAG
	JUNCTION BOX	XXX.XX M1	MECHANICAL ROUGH IN TAG
	CIRCUIT BREAKER PANELS		
	COLD WATER		
	HOT WATER		
	HOT & COLD WATER		
	HOT & COLD POTABLE WATER/ DIRECT WASTE DRAIN COMBO		
	GAS		
	WASTE DRAINS (FLOOR SINK)		
	DIRECT WASTE DRAIN (HUB)		
	WASTE DRAINS (INDIRECT & DIRECT)		
	EXHAUST DUCT (BOILER OR FRY HOOD)		
	SERVICE CHASE		

	EXISTING EQUIPMENT
	DEMOLISHED EQUIPMENT
	RELOCATED EQUIPMENT
	NEW EQUIPMENT
	FUTURE EQUIPMENT



2 EXPRESS DETAIL NOT TO SCALE

1 KES Electrical Plan 1/4" = 1'-0"

HP003	BY
HP003	DESCRIPTION
HP003	INITIAL ISSUE
HP003	REV
HP003	DATE
HP003	02/08/2023
HP003	09/22/2022
HP003	02/08/2023
HP003	09/22/2022

Make it Wonderful

Frankie Foodservice Systems Americas, Inc.
800 Aviation Parkway
Smryns, TN 37167
Tel. +1800 472-2954
frs-customer-service.usa@franke.com
www.frankeusa.com

© 2020 Franke Foodservice Americas, Inc.
These drawings and specifications are the property of Franke Technology and Trademark Ltd. and shall not be reproduced, copied or transferred to any third party without the prior written permission of Franke Technology and Trademark Ltd. (Hepswan, Switzerland)

ACCOUNT
BURGER KING
RESTAURANT #
-
TITLE
KES ELECTRICAL PLAN

OPERATOR
HMS HOST CORPORATION
SITE ADDRESS
6000 N TERMINAL PKWY,
CON. C
CITY
ATLANTA
STATE GA ZIP CODE 30320-7400
COUNTRY USA REGION N. AMERICA

BUILDING TYPE
AIRPORT
ELECTRICAL SERVICE
208/120V - 60HZ
GAS SERVICE
NG

MARKET MANAGER
MYLES COUYOUMJIAN
FRANKE PROJECT NUMBER
1460675
FRANKE STORE NUMBER
5212001

CREATED BY
Designer
DATE ISSUED
02/08/2023
MODIFIED BY
HP003
DRAWING SCALE
As Noted
UNITS
INCH
DRAWING NUMBER
ATLANTA, GA, CON. C
SHEET NAME
KE1.0
REVISION
B

PLUMBING KEYNOTES

KEY VALUE	KEYNOTE TEXT
P.1	P.C. TO EXTEND DRAIN TO FLOOR SINK.

KES PLUMBING WASTE SCHEDULE

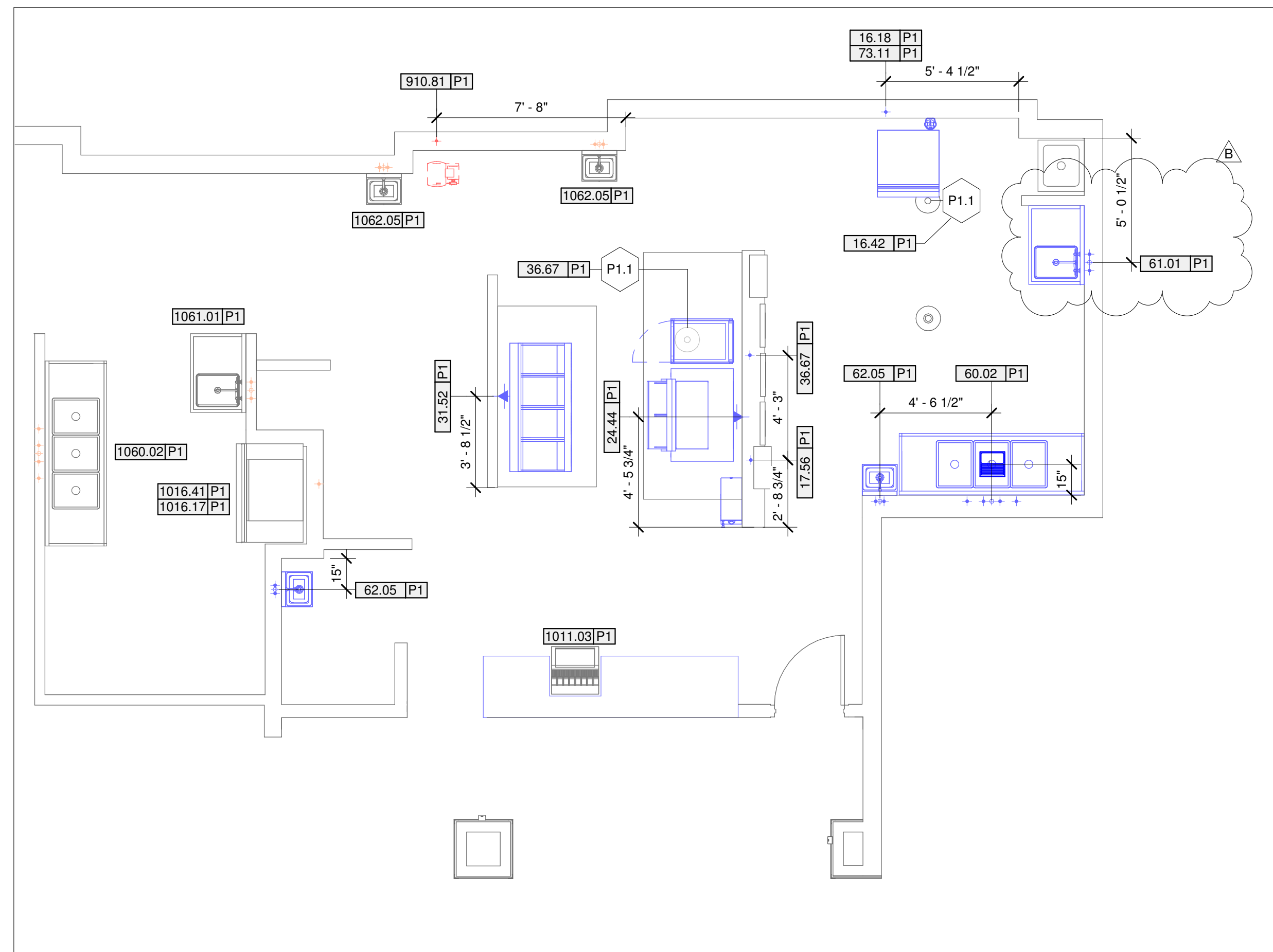
ITEM #	TAG #	QTY.	DESCRIPTION	DIRECT WASTE SIZE	DIRECT WASTE RI HGHT	INDIRECT WASTE SIZE	INDIRECT WASTE CONN HGHT	WASTE CONNECTION TYPE	WASTE REMARKS
16.18	P1	1	ICE MACHINE			3/4"	0"	INDIRECT	P.C. EXTEND DRAIN TO FLOOR SINK
16.42	P1	1	ICE STORAGE BIN			3/4"	0"	INDIRECT	P.C. TO EXTEND DRAIN TO FLOOR SINK.
36.67	P1	1	MINI COMBI OVEN-STEAMER			2"	0"	INDIRECT	P.C. TO EXTEND DRAIN LINE TO FLOOR DRAIN. DRAIN LINE MUST BE VENTED
60.02	P1	1	3 COMPARTMENT SINK			2"	0"	INDIRECT	VERIFY REQMTS W/LOCAL CODES
61.01	P1	1	ONE COMPARTMENT SINK W/ LH DRAINBOARD			2"	0"	INDIRECT	VERIFY REQMTS W/LOCAL CODES
62.05	P1	2	HANDS-FREE WASH STATION SINK	1 7/8"	12"			DIRECT	
1011.03	P1	1	ICE/SODA DISPENSER			0"	0"	-	EXISTING EQUIPMENT TO REMAIN AS-IS
1016.17	P1	1	ICE MACHINE			0"	0"	-	EXISTING EQUIPMENT TO REMAIN AS-IS
1016.41	P1	1	ICE STORAGE BIN			0"	0"	-	EXISTING EQUIPMENT TO REMAIN AS-IS
1060.02	P1	1	3 COMPARTMENT SINK			0"	0"	-	EXISTING EQUIPMENT TO REMAIN AS-IS
1061.01	P1	1	ONE COMPARTMENT SINK W/ LH DRAINBOARD			0"	0"	-	EXISTING EQUIPMENT TO REMAIN AS-IS
1062.05	P1	2	HANDS-FREE WASH STATION SINK	0"	0"	0"	0"	-	EXISTING EQUIPMENT TO REMAIN AS-IS

KES PLUMBING GAS SCHEDULE

ITEM #	TAG #	QTY.	DESCRIPTION	GAS INPUT	GAS SIZE	GAS TYPE	CO2 SIZE	CO2 RI HGHT	CO2 CONN TYPE	GAS REMARKS
24.44	P1	1	BROILER BK FLAMING HEART	96000.0 Btu/h	3/4"	NG				P.C. TO CONNECT TO GAS PIPING ON HOOD'S CHASE AND TO BROILER AS REQ'D
31.52	P1	1	4-BANK FRYER	300000.0 Btu/h	1"	NG				P.C. TO CONNECT TO GAS PIPING ON HOOD TOP AND TO FRYERS AS REQ'D.
910.81	P1	1	CARBONATOR				1/4"	60"	MALE FLARE	

KES PLUMBING POTABLE WATER SCHEDULE

ITEM #	Tag #	QTY.	DESCRIPTION	CW SIZE	CW RI HGHT	HW SIZE	HW RI HGHT	FW TYPE	FW SIZE	FW RI HGHT	POT. WATER CONN TYPE	POT. WATER REMARKS
16.18	P1	1	ICE MACHINE					SCALE INHIBITOR	3/8"	48"	OD	P.C. TO RUN WATER THRU WATER FILTER
17.56	P1	1	INFUSION TEA COFFEE BREWER					FILTERED	1/4"	48"	MALE BARB	P.C. TO RUN WATER THRU WATER FILTER.
36.67	P1	1	MINI COMBI OVEN-STEAMER								GHT	P.C. TO RUN WATER THRU WATER FILTER.
60.02	P1	1	3 COMPARTMENT SINK	1/2"	12"	1/2"	12"				VIA SHUT OFF VALVE ON WALL	VERIFY REQMTS W/LOCAL CODES
61.01	P1	1	ONE COMPARTMENT SINK W/ LH DRAINBOARD	1/2"	12"	1/2"	12"				VIA SHUT OFF VALVE ON WALL	VERIFY REQMTS W/LOCAL CODES
62.05	P1	2	HANDS-FREE WASH STATION SINK	1/2"	12"	1/2"	12"				VIA SHUT OFF VALVE ON WALL	
73.11	P1	1	FILTER FEEDER SCALE INHIBITOR					FILTER	3/4"	48"	FNPT	P.C. TO RUN WATER THRU WATER FILTER AND CONNECT TO Esc3ICE AS REQ'D.
910.81	P1	1	CARBONATOR					FILTERED	3/8"	60"	MALE FLARE	VERIFY AND REWORK ALL EXISTING UTILITIES AS REQUIRED
1011.03	P1	1	ICE/SODA DISPENSER						0"	0"	-	EXISTING EQUIPMENT TO REMAIN AS-IS
1016.17	P1	1	ICE MACHINE						0"	0"	-	EXISTING EQUIPMENT TO REMAIN AS-IS
1060.02	P1	1	3 COMPARTMENT SINK	0"	0"	0"	0"				-	EXISTING EQUIPMENT TO REMAIN AS-IS
1061.01	P1	1	ONE COMPARTMENT SINK W/ LH DRAINBOARD	0"	0"	0"	0"				-	EXISTING EQUIPMENT TO REMAIN AS-IS
1062.05	P1	2	HANDS-FREE WASH STATION SINK	0"	0"	0"	0"				-	EXISTING EQUIPMENT TO REMAIN AS-IS



1 KES Plumbing Plan
1/4" = 1'-0"

PLUMBING CONTRACTOR NOTES

- P.C. SHALL PROVIDE AND INSTALL SHUT OFF VALVES ON ALL POTABLE WATER AND GAS SUPPLY LINES AT EACH PIECE OF EQUIPMENT WHERE REQUIRED BY CODES. VALVES AND INSTALLATION SHALL MEET ALL APPLICABLE CODES.
- P.C. SHALL CONNECT POTABLE WATER AND GAS SERVICE DIRECTLY TO THE EQUIPMENT ACCORDING TO THE MANUFACTURER'S INSTRUCTIONS. CONNECTIONS SHALL MEET ALL APPLICABLE CODES.
- P.C. TO CONNECT EQUIPMENT TO THE BUILDING WASTE DRAINAGE SYSTEM ACCORDING TO THE MANUFACTURER'S INSTRUCTION. CONNECTIONS SHALL MEET ALL APPLICABLE CODES.
- P.C. TO RECONNECT PLUMBING AND GAS PIPING ON PRE-PLUMBED EQUIPMENT DISASSEMBLED FOR SHIPMENT.
- WHERE EQUIPMENT IS NOT PRE-PLUMBED, P.C. SHALL CONNECT THE PLUMBING AND GAS SERVICE AND PROVIDE INTER-PIPING AS REQUIRED.
- P.C. TO INSTALL FAUCETS, DRAIN ASSEMBLIES AND ACCESSORIES PROVIDED WITH EQUIPMENT.
- WHERE A SERVICE CHASE IS PROVIDED WITH THE EQUIPMENT, THE P.C. SHALL INSTALL THE PLUMBING AND/OR GAS SERVICE THROUGH THE SERVICE CHASE TO THE CONNECTION POINT(S) ON THE EQUIPMENT AS REQUIRED. ALL CONNECTIONS AND PIPING SHALL MEET ALL APPLICABLE CODES.
- P.C. SHALL PROVIDE AND INSTALL CONDENSATE DRAIN LINES FROM THE WALK-IN COOLER AND FREEZER EVAPORATOR COILS.
- P.C. SHALL PROVIDE AND INSTALL BACK-FLOW PREVENTION DEVICES WHEN REQUIRED BY THE AUTHORITY HAVING JURISDICTION.
- P.C. SHALL PROVIDE AND INSTALL AUTOMATIC GAS SHUT-OFF VALVES WHEN REQUIRED BY THE AUTHORITY HAVING JURISDICTION.
- FRANKE KITCHEN DRAWINGS INCLUDE ONLY THOSE REQUIREMENTS FOR SPECIFIC KITCHEN EQUIPMENT. REFER TO BUILDING FLOOR PLANS FOR OTHER PLUMBING REQUIREMENTS AND LOCATIONS.
- NOTIFY FRANKE PROJECT MANAGER IMMEDIATELY IN WRITING IF THESE DRAWINGS ARE IN CONFLICT WITH ANY LOCAL, STATE OR NATIONAL CODES.

ABBREVIATIONS

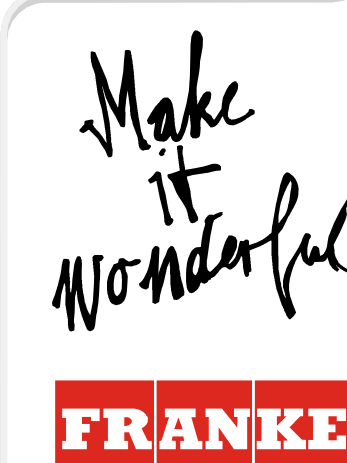
AFF	ABOVE FINISHED FLOOR
FPM	FEMALE PIPE THREAD

SYMBOL LEGEND

	SINGLE RECEPTACLE	XXX.XX	EQUIPMENT TAG
	DUPLEX RECEPTACLE	XXX.XX [E]	ELECTRICAL ROUGH-IN TAG
	SPECIAL RECEPTACLE	XXX.XX [P]	PLUMBING ROUGH-IN TAG
	JUNCTION BOX	XXX.XX [M]	MECHANICAL ROUGH IN TAG
	CIRCUIT BREAKER PANELS		
	COLD WATER		
	HOT WATER		
	HOT & COLD WATER		
	HOT & COLD POTABLE WATER/ DIRECT WASTE DRAIN COMBO		
	GAS		

	EXISTING EQUIPMENT
	DEMOLISHED EQUIPMENT
	RELOCATED EQUIPMENT
	NEW EQUIPMENT
	FUTURE EQUIPMENT

REV	DATE	DESCRIPTION
B	02/08/2023	MOVE LOCKERS, ADD ONE SINK, RELO FRONT COUNTER
A	09/22/2022	INITIAL ISSUE



Frانك Foodservice Systems Americas, Inc.
800 Aviation Parkway
Smyrna, TN 37167
Tel. +1800 472-2954
francustomer-service.us@franke.com
www.franksupply.com

© 2020 Franke Foodservice Americas, Inc.
These drawings and specifications are the property of Franke Technology and Trademark Ltd. and shall not be reproduced, copied or transferred to any third party without the prior written permission of Franke Technology and Trademark Ltd. (Hergau, Switzerland)
Exclusion of Liability:
FRANKE shall not be responsible for the accuracy of the floor plans and construction drawings. All dimensions by the client prior to installation. Specifications for power consumption and connections are limited to equipment supplied by FRANKE. All third party accessories shown are within the responsibility of the client. FRANKE reserves the right to change equipment without notice.

ACCOUNT
BURGER KING
RESTAURANT #
-
TITLE
KES PLUMBING PLAN
OPERATOR
HMS HOST CORPORATION
SITE ADDRESS
**6000 N TERMINAL PKWY,
CON. C**
CITY
ATLANTA
STATE
GA ZIP CODE
30320-7400
COUNTRY
USA REGION
N. AMERICA

BUILDING TYPE
AIRPORT
ELECTRICAL SERVICE
208/120V - 60HZ
GAS SERVICE
NG
MARKET MANAGER
MYLES COUYOUMJIAN
FRANKE PROJECT NUMBER
1460675
FRANKE STORE NUMBER
5212001
CREATED BY
Designer
DATE ISSUED
02/08/2023
MODIFIED BY
HP033
DRAWING SCALE
As Noted
UNITS
INCH
DRAWING NUMBER
ATLANTA, GA, CON. C
SHEET NAME
KP1.0
REVISION
B